



5TH CATEGORY - HISTORIC RACING

GROUP Nc

APPROVED VEHICLE SPECIFICATION

This form details the approved specifications of individual vehicle models in the 5th Category Historic car group. To be issued with an Historic Log Book, cars need to comply with these specifications, the physical appearance shown in the illustrations, the general historic rules, and the specific regulations relative to the subject vehicle Group, as detailed in the current CAMS Manual of Motor Sport.

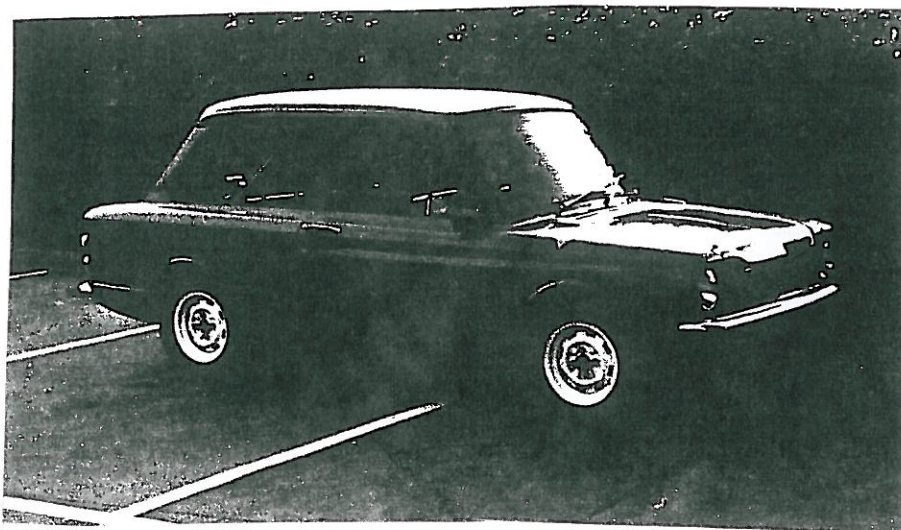
Make of Car: Hillman

Model: Imp Mk.II, Imp GT
& Rallye Imp

Period of Original Manufacture: 1965/69

CAMS Historic Group: Nc

Date of Issue of this Document: 1 December 2006



SECTION 1 - CHASSIS

1.1 CHASSIS FRAME

Description:	Unitary construction	Period of Manufacture: 1965/69
Manufacturer:	Rootes Group	
Chassis no. from:		
Chassis no. location:	Front compartment	
Material:	Steel	
Comments:		

1.2 FRONT SUSPENSION

Description:	Independent – swing axle	
Spring medium:	Coil	
Damper Type:	Telescopic	Adjustable: Permitted
Anti-sway bar:	Not fitted	Adjustable:
Suspension adjustable:	No	Method:
Comments:	Refer Group Nc regulations for permitted modifications	

1.3 REAR SUSPENSION

Description:	Independent – trailing arms	
Spring medium:	Coil	
Damper type:	Telescopic	Adjustable: Permitted
Anti-sway bar:	Not fitted	Adjustable:
Suspension adjustable:	No	Method:
Comments:	Refer Group Nc regulations for permitted modifications.	

1.4 STEERING

Type:	Rack & pinion	Make: Rootes
Comments:		

1.5 BRAKES

	Front	Rear
Type:	Drum or Disc	Drum
Dimensions:	Drum 203 x 38 mm Or Disc 210mm x 8mm	203 x 38 mm
Material of drum/disc	Cast Iron	Cast iron
No. cylinders/pots per wheel:	2	1
Actuation:	Hydraulic	Hydraulic
Caliper: Make, Material, Type:	Girling Cast Iron	
Master cylinder make:	Girling	Type: Single

Adjustable bias: Permitted

Servo Fitted: To some models.

Comments: Refer Group Nb regulations for permitted modifications

SECTION 2 - ENGINE

2.1 ENGINE

Make:	Rootes	
Model:	Imp	
No. cylinders:	4	Configuration: In line
Cylinder Block-material:	Aluminium	Two/Four Stroke: Four stroke
Bore - Original:	68mm	Max. allowed: 69.5mm
	Optional 72.55mm	Optional 72.55mm
Stroke - original:	60.4mm	Max. Allowed: 60.4mm
Capacity - original:	875cc	Max. allowed: 909cc
Optional:	998cc	998cc
Cooling method:	Water	
Identifying marks:		
Comments:	Radiator must remain located in engine compartment.	

2.2 CYLINDER HEAD

Make:	Rootes		
No. of valves/cylinder-	2	Inlet: 1	Exhaust: 1
No. of ports total:		Inlet: 4	Exhaust: 4
No. of camshafts:	1	Location: Cylinder head	Drive: Chain
Valve actuation:		Direct by buckets	
Spark plugs/cylinder:		1	
Identifying marks:			
Comments:			

2.3 LUBRICATION

Method(Wet/Dry Sump):	Wet sump	Oil tank location:	
Dry sump pump type:		Location:	
Oil cooler standard:	Fitted on some models.	Location:	Engine compart/t
Comments:	Oil cooler permitted. Refer Group Nb regulations for permitted modifications.		

2.4 IGNITION SYSTEM

Type:	Coil & distributor
Make:	Lucas
Comments:	Refer Group Nb regulations for permitted modifications.

2.5 FUEL SYSTEM

Carburettor: Make:	Solex	Model & Number:	B30 PHIT One
	Stromberg		125 CD Two
Fuel injection Make:		Type:	
Supercharged(Yes/No):	No.	Type	
Comments:	Period carburettors of different make type and number may be fitted.		

SECTION 3 - TRANSMISSION

3.1 CLUTCH

Make: Borg & Beck **Type:** Dry plate **Diameter:** 15.9cm
No. of Plates: 1
Actuation: Hydraulic
Comments: Clutch and method of actuation are free.

3.2 TRANSMISSION

Type: Transaxle **Model:**
Make: Rootes
No. forward speeds: 4 **Gearbox location:** At rear with Transaxle
Gearchange type and location: Floor remote
Case material: Aluminium **Identifying marks:**
Comments: Refer Group Nc regulations for permitted modifications.

3.3 FINAL DRIVE

Make: Rootes **Model:**
F/R/All Wheel Drive: Rear
Ratios: Various
Differential: **Make:** Rootes **Type:** Free
Comments: Refer Group Nc regulations for permitted modifications.

3.4 TRANSMISSION SHAFTS (EXPOSED)

Number: 2 **Location:** Transaxle to rear wheels.
Description: Solid shafts with donuts & universal joints.
Comments:

3.5 WHEELS & TYRES

Wheel type - Original:	Pressed steel.	Material - Original: Steel.
Allowed:	Steel or Period alloy.	Allowed: Steel or alloy
Fixture method:	Bolt on	No. studs: 4
	FRONT	REAR
Wheel dia. & rim width -		
Original:	4" x 12"	4" x 12"
Allowed :	5" x 12" or 13"	5" x 12" or 13".
Tyre Section -		
Original:		
Allowed :		
Aspect ratio - minimum:	60%	60%
Comments:		

SECTION 4 - GENERAL

4.1 FUEL SYSTEM

Tank Location: Front compartment **Capacity:** 27 litres
Fuel pump, type and location: Mechanical, cam cover. **Make:** AC
Comments: Fuel pumps are free.

4.2 ELECTRICAL SYSTEM

Voltage: 12 volts **Generator/Alternator fitted:** Generator.
Battery Location: Engine compartment.
Comments: Alternator permitted. Refer Group Nc regulations for permitted modifications.

4.3 BODYWORK

Type: Two door sedan **Material:** Steel.
No. of seats: 4 **No. doors:** 2
Comments: All body panels to be of steel and all windows of glass.

4.4 DIMENSIONS

Track - Front: 1280mm **Rear:** 1250mm
Wheelbase: 2100mm **Overall length:** 3500mm
Dry weight: 630kg.
Comments:

4.5 SAFETY EQUIPMENT : *Refer applicable Group Regulations*